

# Bruce Peninsula Biosphere Association

## Our Local Commitment

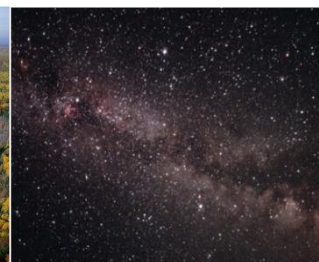


- Community-based charitable, organization established in 2002
- Implementing the three concepts of UNESCO World Biosphere Reserves:

Conservation

Sustainable Economic Development

Community Capacity



# Conservation and Stewardship Plan: Projects

## Six Streams Initiative

- to improve water quality by tackling residential and farming sources of nutrients and soil erosion

## Forest Strategy

- to maintain and enhance forest connectivity in Spry-Little Pike Bay area

## Dark Skies

- to preserve and celebrate the natural night sky
- Bayside Astronomy



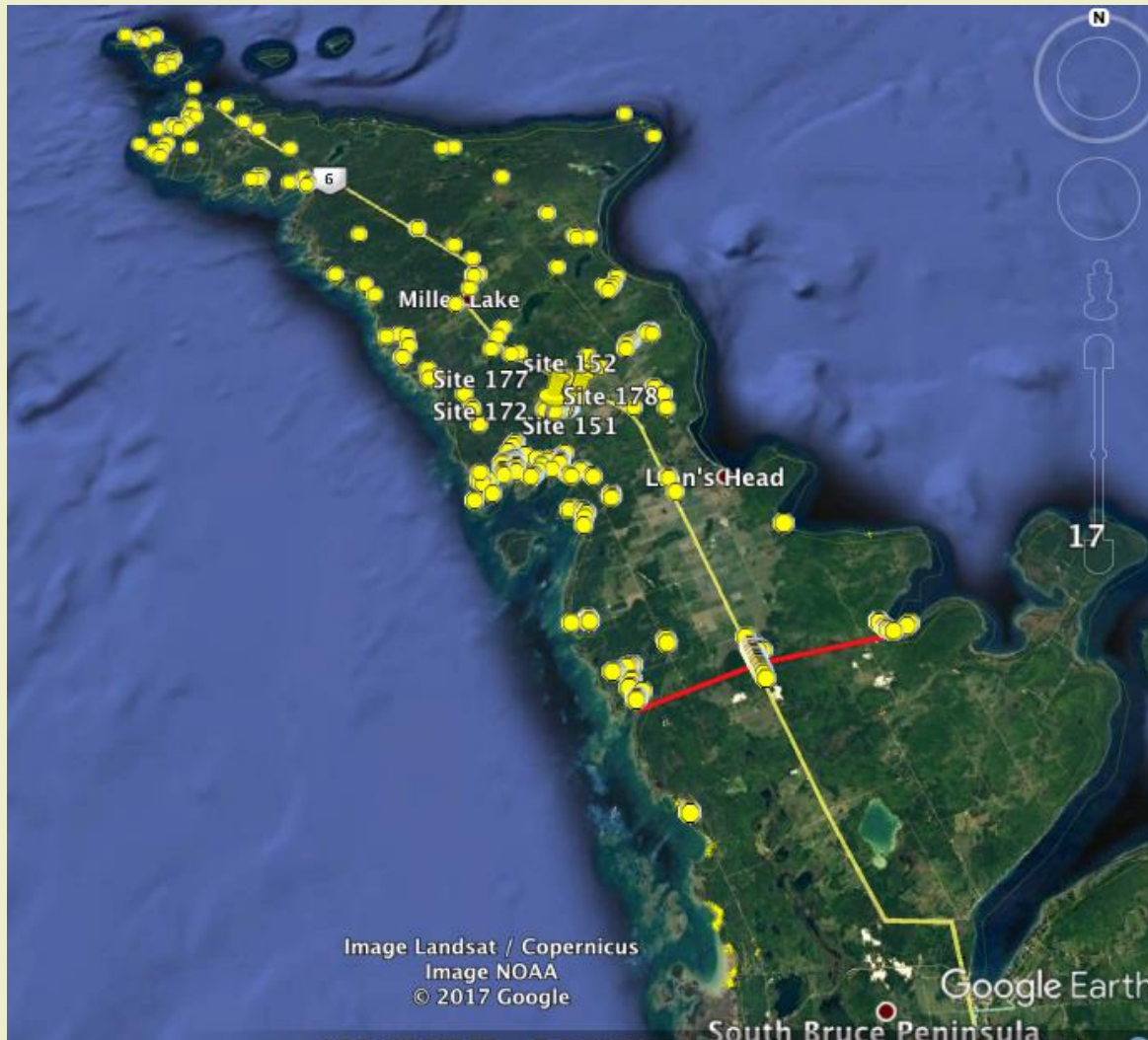
# Invasive Phragmites Eradication Project

## Project to map and control invasive Phragmites:

- Community Control Projects
- Partners with landowners, conservation and government groups
- Funding through MOECC, ECCC, NCC, MNBP
- Regional Management Plan
- Invasive Species Education

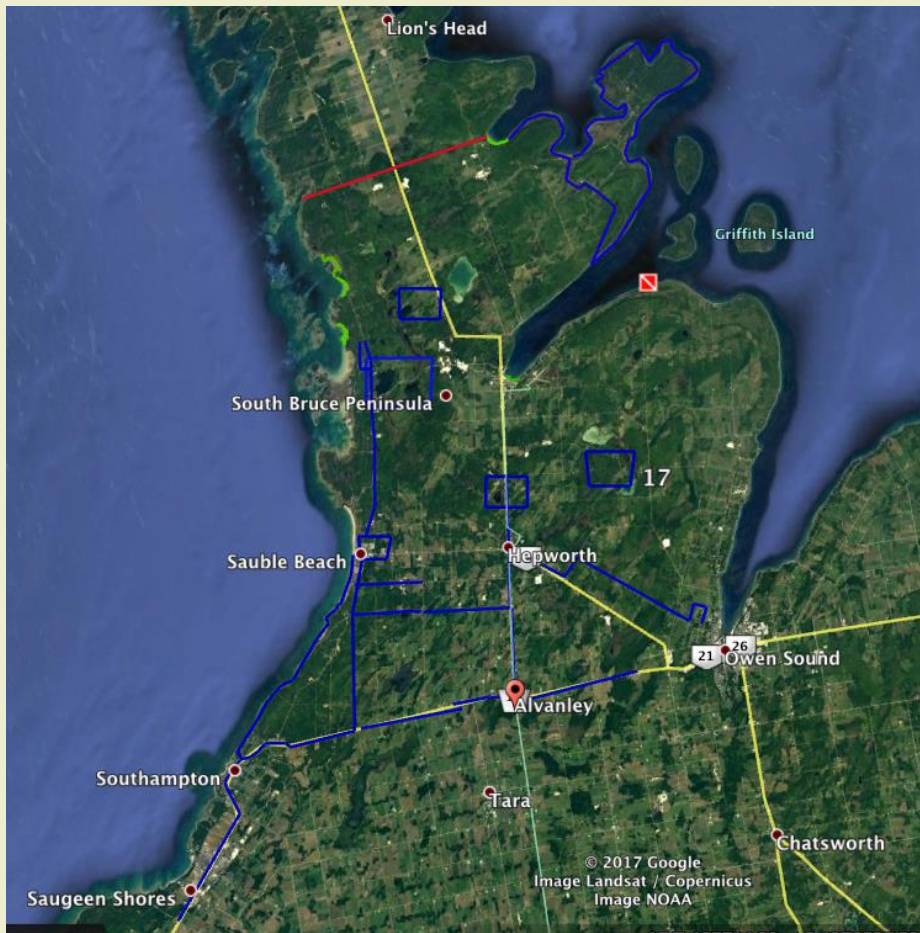


# Northern Bruce Peninsula Sites



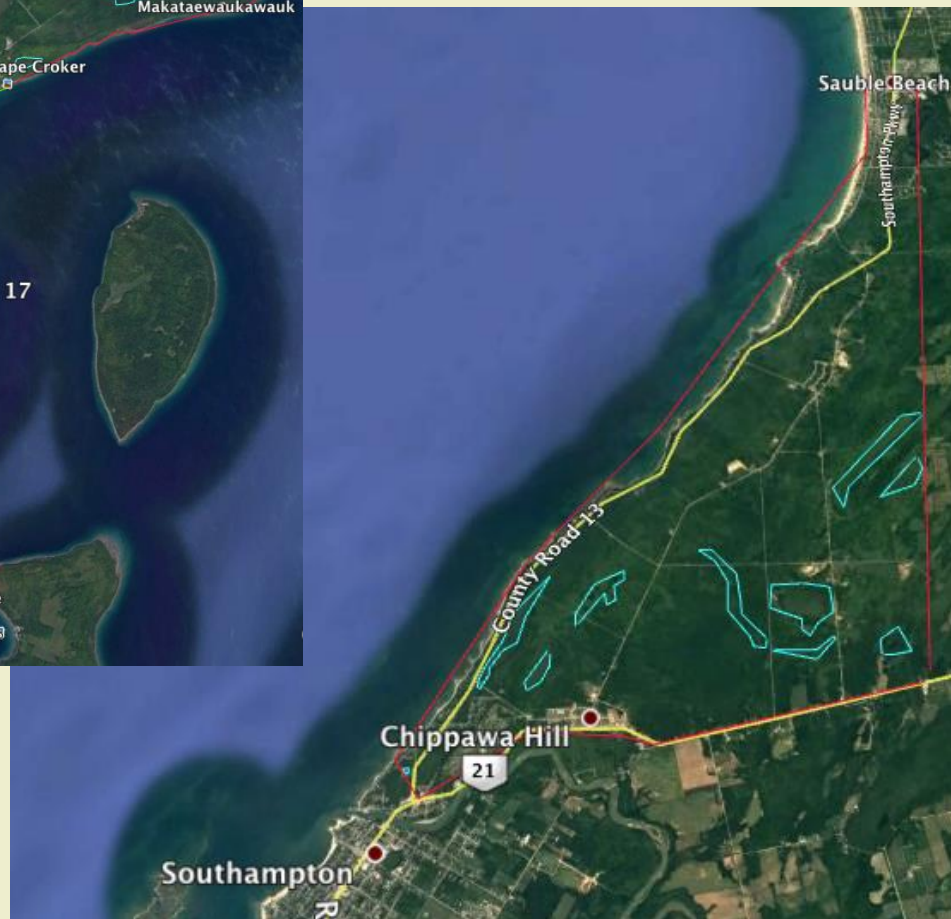
- 376 patches identified and surveyed
- 60 patches have been eradicated
- mechanical and chemical control

# South Bruce Peninsula 2017



- 482 patches identified and 383 patches were surveyed
- 115 patches were mechanically cut

# Surveying Neyaashiinigmiing and Saugeen Ojibway Nation Territory



# Amphibious Cutter comes to Oliphant

In 2.5 days we disposed of 9600 kg of biomass!



# Volunteers

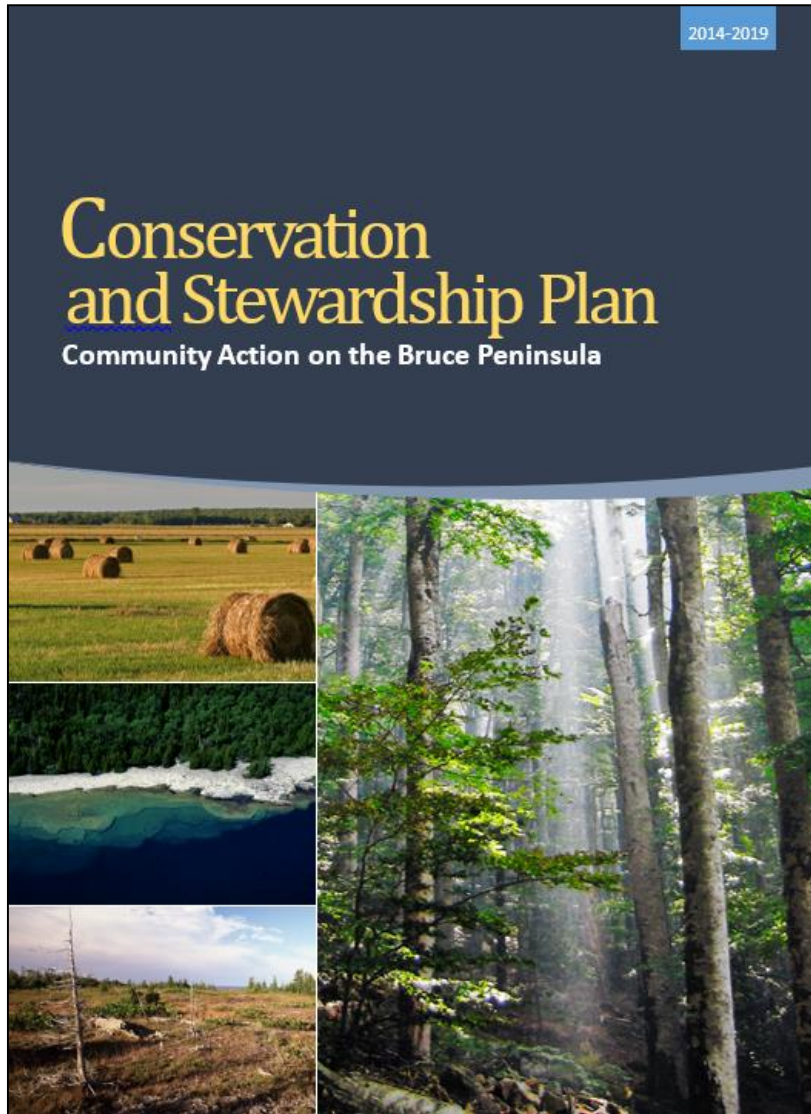
## Community Phragm Fighters

- 5 Communities in Northern Bruce
- 6 Communities in Southern Bruce
- Invasive species education, workshops
- Enlisting community leaders
- Creating community mobilization kits to assist these leaders





# Conservation and Stewardship Plan



## Initiated first regional Conservation and Stewardship Plan for the Bruce Peninsula:

- Process guided by a 23-person Steering Committee, over 700 people engaged in process, over 200 documents consulted
- Identified 7 biodiversity features and assessed ecological health
- Identified key ecosystem stressors
- Identified strategies and a comprehensive suite of voluntary actions

# Little Red Bay Before and After

