



# Coastal Wetlands invasive Phragmites Eradication

Pointe au Baril



Collingwood



Cognashene



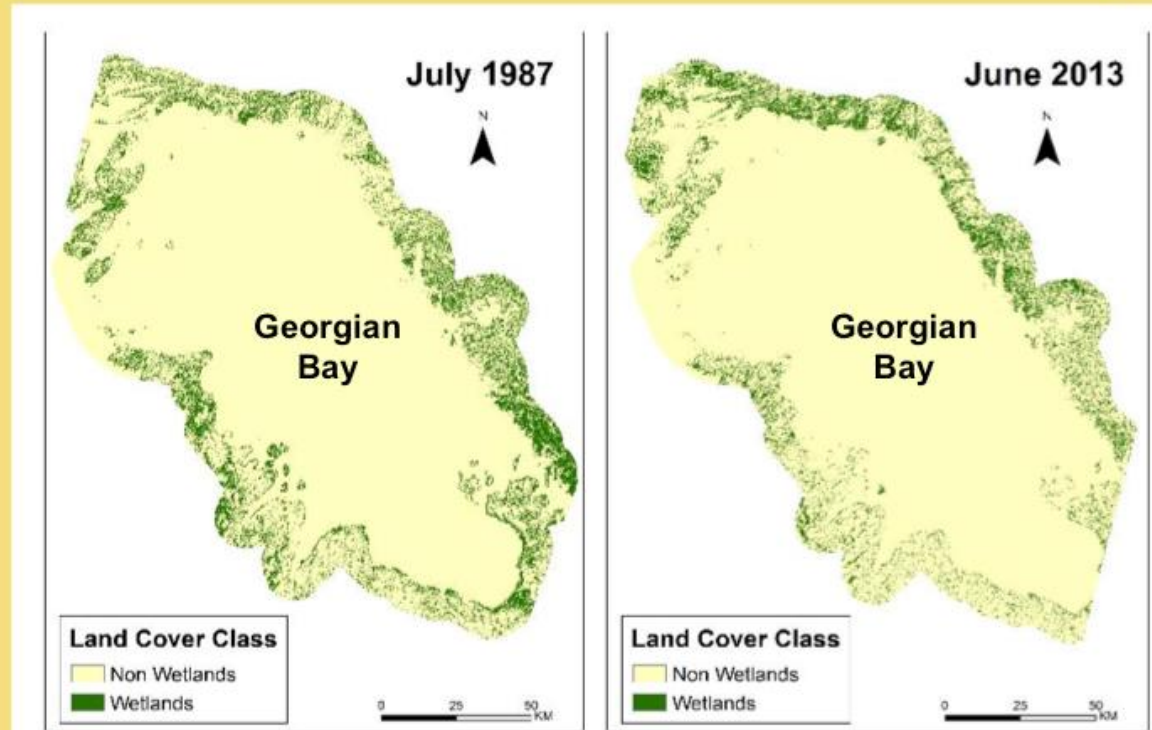
Woods Bay



# Large and complex

“Georgian Bay Coastal Route”  
is 1285 km  
  
(15 days  
suggested trip).

Results: Wetland vs Non-Wetland Maps



Slide from Great Lakes Climate II – Impact of decreasing lake levels on Great Lakes Wetlands – NASA - 2015



# Communities /GBF partners





# Workshops and Training



# Phragmites: High impact to Tay shorelines



Photo Credit: David Sweetnam



Photo: Heather Sargeant



Photo Credit : Kelley Macgillivray and Donna Deneault



Photo: Credit Donna Deneault



Photo Credit: Severn Sound Environmental Association of Georgian Landing Homeowner's Association  
Property





# Volunteers need help



BEFORE



AFTER

This one stand took 8 volunteers 6+ hours, mostly in the water to cut, haul, and take away, organize

Many volunteers are senior



# Volunteers need help



BEFORE



AFTER

This stand  
took:

20  
Phragbusters  
6+ hours 1<sup>st</sup>  
year

15  
Phragbusters 4  
hrs 2<sup>nd</sup> year



GEORGIAN BAY  
**FOREVER**

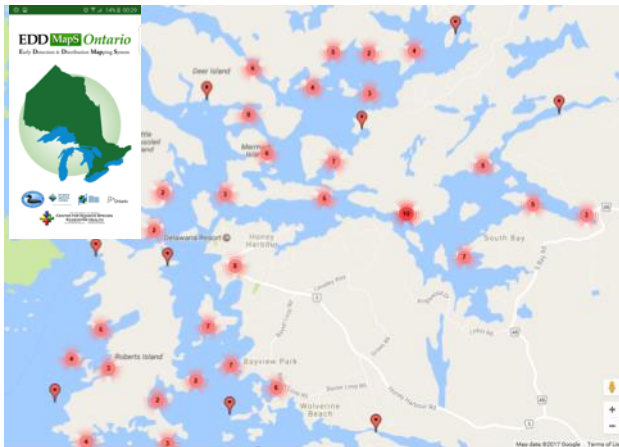


# Honey Harbour Volunteers Cut Phragmites





# Examples of Program in work



Mapping Example  
In 2017, about  
180 mappings by  
students in one  
area

## CUT DATES

Our biggest community cut this year will be in **Charlie's Channel on Saturday August 12th at 10am**. White Contracting and Barging has generously donated a barge that will be at this site for the Aug 12/13 weekend—**anyone who has Phrag cuttings for disposal may drop them off at this time!**

We really need volunteers to help out, so we hope that you will join us at any or all of the following cuts as well (more dates to follow):

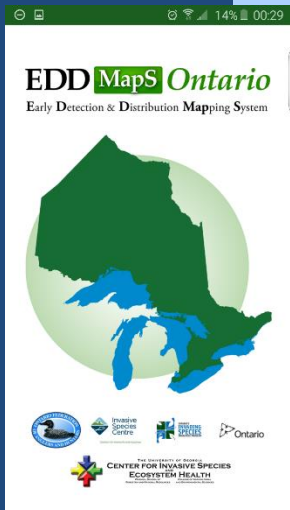
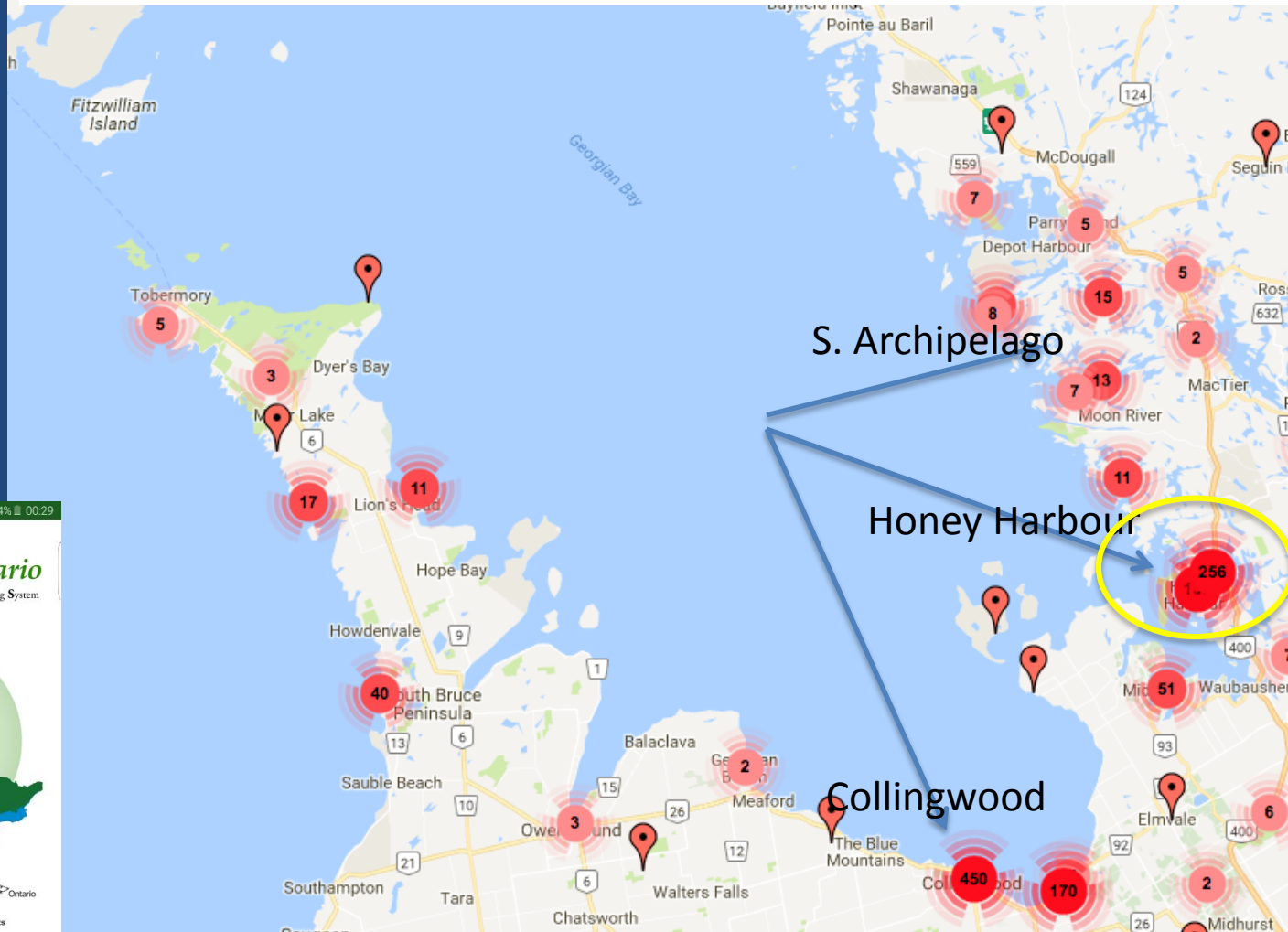
- Sunday, August 6th at Bide-a-Wee Channel (10am)
- Monday, August 7th at the Walshes'/Lades' (10am)
- Tuesday, August 8th at the McKees' (10am)
- Saturday, August 19th at the South Bay bridge(9am)
- Sunday, August 20th at Medicine Island (10am)
- Monday, August 21st at the Shields' (10am)

Prioritizing  
large stands,  
recruiting, and  
organizing  
volunteers



Working with the  
community  
volunteers to get  
a lot more done!

# Areas with High # of Recoded Sites Have Trained People to Map the Area







# Benefits of the Program



*GBF hired students with residents*



*Kristin and Conor Fighting Phragmites in 2017*

- ✓ **Determine scope of the problem**
  - Mapping
- ✓ **Increased training and education**
  - Door to door (dock-to-dock),
- ✓ **Plan development and prioritization**
  - Identify large stands which need extra help
- ✓ **Community cut help**
  - Help set up group cuts
  - Bring power cutters

**Result:** Exponential increase in stands managed and cut!



# Coalitions

**Collingwood:** GBF, Nottawasaga Valley Conservation Authority, Town of Collingwood, Blue Mountain Watershed Trust, RBC Blue Water Project, volunteers and more

**Tay Township:** GBF, Severn Sound Environmental Association, Tay Township, Talpines Cottage Association, many volunteers

**The Massasauga Provincial Park  
Phragmites Working Group:** The Park, GBF, K. Denune (GBLT and San Souci), South Channel Association, Friends of Massasauga



Collingwood





- It's tough work...but it works!



2013



2014



2015



Most importantly:  
Thank-you for all your work and  
collaboration





# Questions?

David Sweetnam

[executivedirector@georgianbayforever.org](mailto:executivedirector@georgianbayforever.org)

[www.georgianbayforever.org](http://www.georgianbayforever.org)