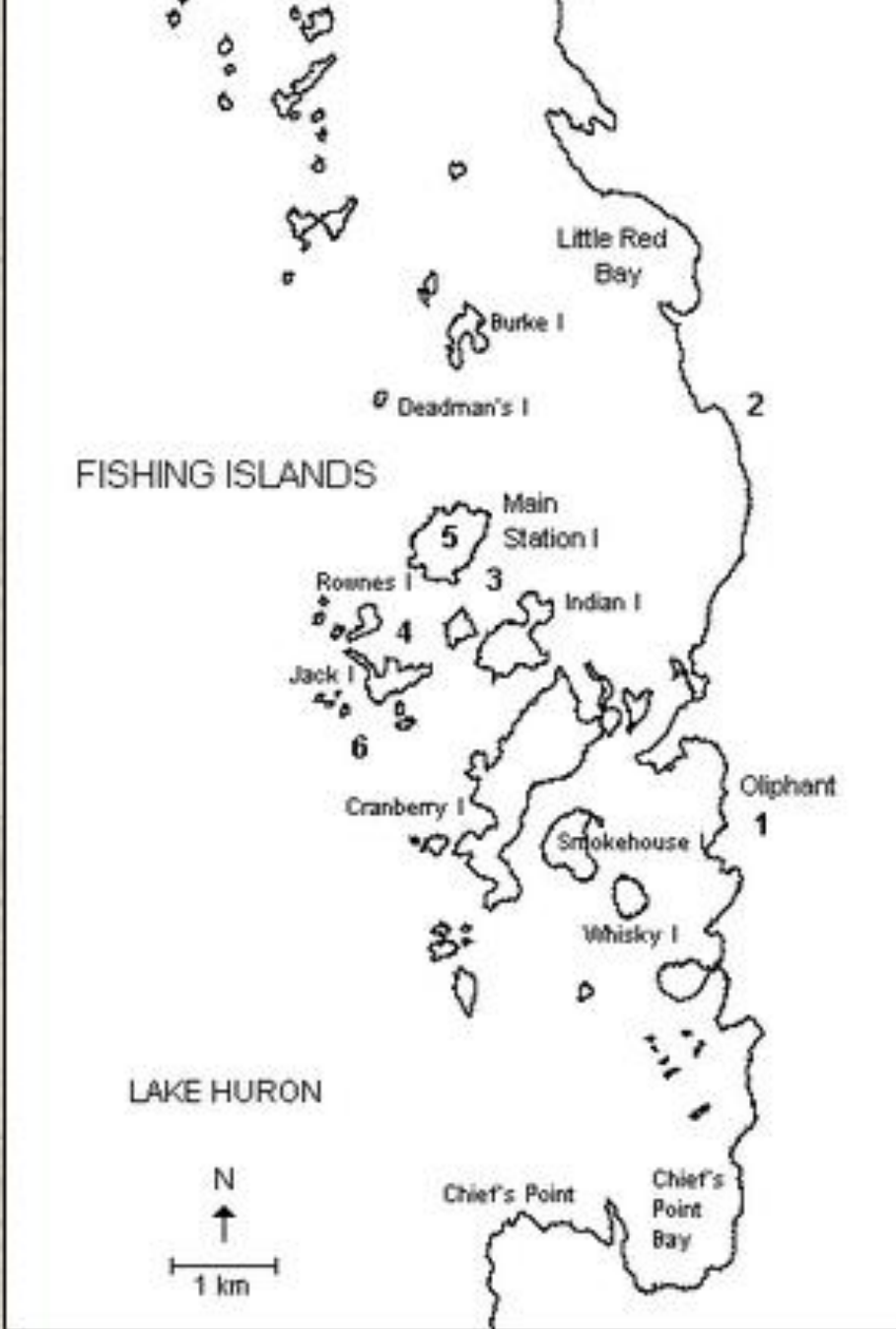




Oliphant Fishing Islands Phragmites Community Group

OPWG January 29, 2019





Oliphant Fishing Islands Phragmites Community Group (OFIPCG)

A not for profit volunteer group started in 2017.

Focus is primarily Phragmites in the Fishing Islands.

Phrag has been ID'd from Burke to Orr Island: **8 km** apart.

Areas worked on in 2017, 2018 – for 2019 add the Gut.

Site "L" to Government Dock (mainland) is **2.5 km through the Gut.**

Islands are 1-3 km offshore from mainland.

Phrag spread into the area in approx. 2008 (low water).

Water depth varies by year + location.

(1 site where we worked in 2018 was 6 feet deep!)

Phragmites Sites are 99% in water

Coastal wetlands: must protect native
+ endangered species (plant + animal)



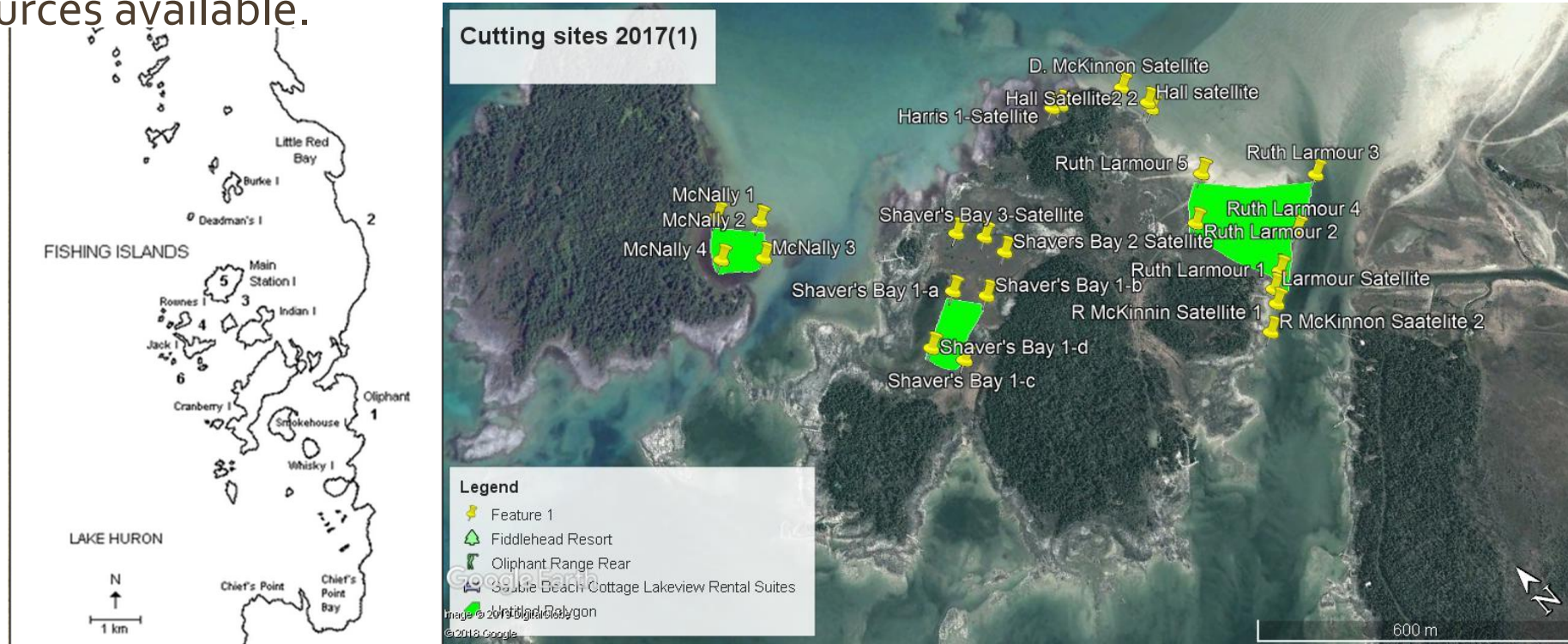
The Gut: navigation channel
(video)



Cutting sites selected in 2017: year 1 OFIPCG

14+ acres total /one site(L) is 9 acres.
Chose sites we felt we could properly manage year 1 with human + other resources available.

> 46 volunteers worked individually or in groups for 600 hours on Phrag around 6 closely clustered islands.



Cutting

Cut with: 3 Stihl Cutters + Raspberry cane cutters.



Disposal: transport to shore, dry, burn

Lifted cut Phrag onto small watercraft + pulled to island, unloaded to dry + burn on exposed rock areas.

Hard work!



2017 Successes

Successes

1. Cut completely all sites totaling 14+ acres
but one (L) – see photo.
2. Rallied 46 volunteers. **Collaborated** with Grey Sauble Conservation Authority (**GSCA**) + Bruce Peninsula Biosphere (**BPBA**) staff who assisted at L stand.
3. 600 volunteer hours total.
(300 on site L)



+ Challenges

Challenges

1. site (L) cut only about 1/3 of 9 acres. Physically unable to cut the rest: too dense, tall and stalks too rigid and durable.

<https://m.youtube.com/watch?feature=youtu.be&v=qcZ4d5uHato>

2. **Disposal** : i) transporting to islands in small boats + ii) burning. **Physically exhausting + very time consuming**

Need an exposed rocky area to dry biomass.
Not all islands have such sites.
Burning can be dangerous. Depends on the wind, burn bans etc.

2018 Plans (1-6)

1. Re-cut all sites we had cut 2017
2. Add more sites to cut IF supported by engaged adjacent landowners
3. Continue/increase collaboration.



Successes

1. All 2017 sites but L (9 acre) were recut using our STIHL cutters and raspberry cutters
Phrag was 50% less dense + robust than when cut in 2017 so took 1/2 the time and effort.
2. 12 new sites cut for 1st time with landowner support. Several near 5 additional islands.
3. **Collaboration:** GSCA and BPBA continue to support us with staff.

Added Oliphant Campers' Association (OCA) who made a generous donation to our fundraiser to bring Janice Gilbert.

2018 Plans (1-6)

4. ****Very important** to completely cut for the first time the 9 acre site (L). Planned to use amphibious cutters (Truxors).



Successes

4. Fundraised to hire **Janice Gilbert + crew** from the **Invasive Phragmites Control Centre**: cut 9 acres in 2 days!!



2018 Plans (1-6) (improved disposal)

5. Have the cut Phrag deposited on island shore by Truxors not by us.



Successes

5. Phrag transported to shore by us + Truxors then Truxors put on shore. **271 man hrs, 2 days**
25 x 75 x 10 feet Phrag mountain!



2018 Plans (1-6)

6. Improve disposal: Find an alternative to burning the Phrag deposited + dried on exposed rock on some islands.

Many islands have no exposed rock to deposit cut Phrag to dry.

Challenge:
No alternative found in 2018.



Successes

6. LW + Rebecca Fergusson (GSCA) presented a delegation to the Town of South Bruce on November 20, 2019.

We requested the Town provide staff + equip to take Phrag to a quarry to burn if we transport cut biomass to government dock on mainland.

2.5 km from L Phrag stand.



Plans 2019

1. Disposal must be improved!

We already have Phrag mountain to burn from 2018 and will be cutting more in 2019.

We are waiting for final outcome of our Delegation to Town of South Bruce. Response seemed positive on the day.

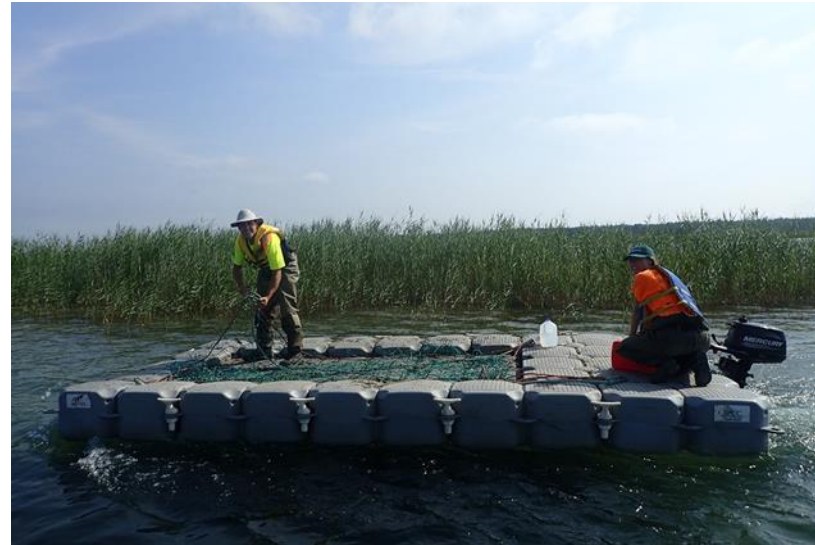
2. We are having a raft built for ourselves to use to transport cut biomass.
i.e. To the Government dock to be taken to be disposed of. Ideally to a quarry for burning.

3. Recut all sites done in 2018 and add new sites only if nearby resident actively support.

4. Start to cut Phragmites around the boating channel (the Gut) – OCA plans to support this.

5. Continue to collaborate with OCA + FOOCE, Grey Sauble Conservation Authority, BPBA.

6. Fundraise again to bring back Janice Gilbert, her crew and Truxors.





Leslie Wood

Thank you.

See our new hats with logo designer (6 years old!) >

